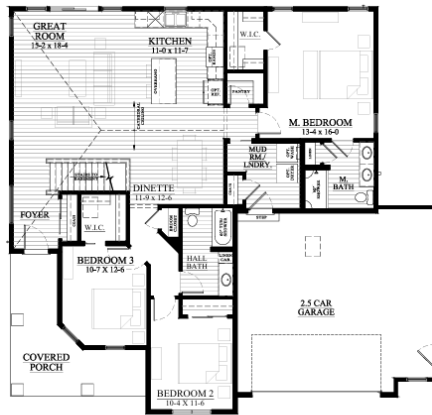


Tyranena Point - Lot #33
1464 Tyranena Terrace, Lake Mills, WI 53551



\$TBD

**AVAILABLE IN
 APRIL!!**

We welcome other Realtors!

2.4% Realtor Co-broke

SUMMARY

Nestled in the picturesque Tyranena Point Subdivision of Lake Mills, this stunning Stratford model offers modern finishes and spacious living areas, blending style and comfort in every corner. The open-concept kitchen features Steel Grey cabinetry and beautiful Quartz countertops, while the luxurious LVP flooring throughout the home ensures durability and easy maintenance. The soaring cathedral ceilings create an open, airy atmosphere, and the covered front porch offers the perfect space for you to unwind and relax. Perfectly combining modern amenities with the charm of a lakeside community, this home is ready to welcome you. Don't miss out—schedule your tour today! Call/Text/Email Deanne Welper see contact info below!

The Stratford — #24TP33

1,640 Square Feet
.27 Acre Lot

WHY CHOOSE LOOS

- ◆ Steel Grey Cabinetry
- ◆ LVP Flooring
- ◆ Cathedral Ceilings
- ◆ Quartz Countertops
- ◆ 3 Bedrooms and 2 Baths
- ◆ Covered Front Porch
- ◆ 1,640 Sq Ft
- ◆ Lot 33: .27 Acre
- ◆ 2.5 Car Garage
- ◆ Our Exclusive Double-Layer Wall System
- ◆ Double Hung Alliance Windows (Limited Lifetime Warranty)
- ◆ 1 Year Builder, 10 Year Structural, & 30 Year Dry Basement Warranties



All Loos Homes are Focus on Energy Tested & Certified and exceed the Wisconsin Green-Built™ Standards!

Call/Text/Email Listing Agent:

DEANNE WELPER



(262) 352-1654 or Deanne@looshomes.com

Home rendering shown above may not reflect the actual home built and shows some optional features.