

Morgan Station - Lot #42
1531 Woodside Drive, Oconomowoc, WI 53066

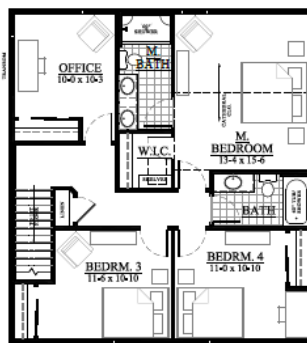
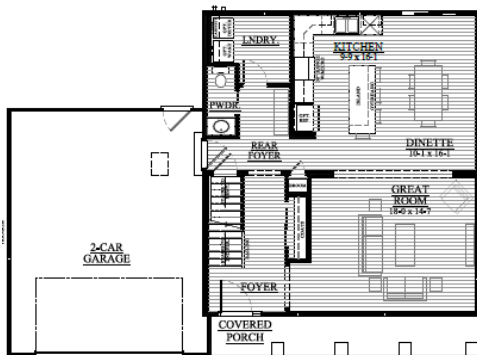


\$499,900

**AVAILABLE IN
 FEBRUARY!!**

We welcome other Realtors!

2.4% Realtor Co-broke



The Alexandria — #24MS42
1,951 Square Feet
.25 Acre Lot

WHY CHOOSE LOOS

- ◆ Basalt Cabinetry
- ◆ Quartz Countertops
- ◆ 4 Bedrooms and 2.5 Baths
- ◆ 1,951 Sq Ft
- ◆ Lot 42: .25 Acre
- ◆ 2 Car Garage
- ◆ LVP throughout main floor, LVT bathrooms
- ◆ Oversized Kitchen Island
- ◆ Our Exclusive Double-Layer Wall System
- ◆ Double Hung Alliance Windows (Limited Lifetime Warranty)
- ◆ 1 Year Builder, 10 Year Structural, & 30 Year Dry Basement Warranties

Call/Text/Email Listing Agent:

RYAN PRELLWITZ



SUMMARY

Nestled in the picturesque Oconomowoc, Morgan Station Subdivision, an exciting opportunity awaits in the form of a brand new two-story home. This beautiful property combines modern design with thoughtful features that will make it the perfect place to call home. The open floor plan seamlessly connects the kitchen with upgraded cabinets, fixtures, and countertops to the living spaces, creating an inviting atmosphere for family and friends to gather. The master suite offers a private retreat with a spacious walk-in closet, ensuring that you have all the storage space you need. With an oversized 583 sq. ft. 2 car garage, you'll have plenty of room for your vehicles and additional storage. Please Call/Text/Email Ryan Prellwitz, see contact info below!



All Loos Homes are Focus on Energy Tested & Certified and exceed the Wisconsin

Green-Built™ Standards!



(715) 661-0014 or Ryan@looshomes.com

Home rendering shown above may not reflect the actual home built and shows some optional features.