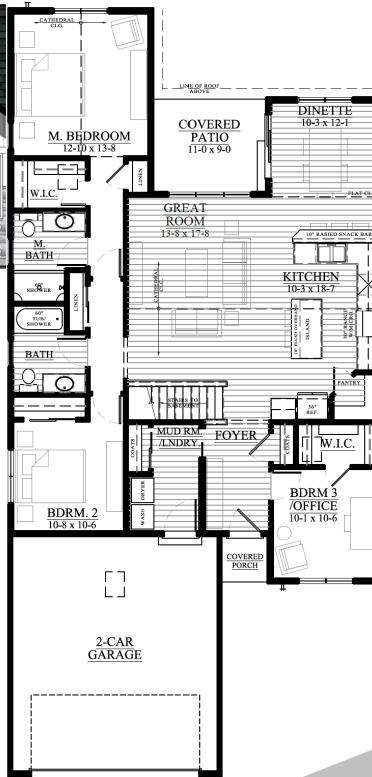


Conservancy Place - Lot #12A
307 E. Washington Street, Jefferson, WI 53549



\$359,900

**AVAILABLE IN
 JANUARY!!**

We welcome other Realtors!

2.4% Realtor Co-broke

**NEW ZERO LOT-LINE,
 RANCH VILLAS BY
 LOOS CUSTOM HOMES!!!**

SUMMARY

Nestled in the picturesque Conservancy Place Subdivision, an exciting opportunity awaits in the form of a brand new "Ranch Villa" home. This beautiful property combines modern design with thoughtful features that will make it the perfect place to call home. The open floor plan seamlessly connects the kitchen to the living spaces, creating an inviting atmosphere for family and friends to gather, especially with the oversized island! The master suite offers a private retreat with a spacious walk-in closet, ensuring that you have all the storage space you need. Added egress window for expansion! Please Call/Text/Email Deanne Welper, see contact info below!

The Villas — #24CP12A

1,538 Square Feet

.14 Acre Lot

WHY CHOOSE LOOS

- ◆ Two Tone Cabinetry
- ◆ Large Kitchen Island w/ Walk-in Pantry
- ◆ Upgraded Lighting/ Plumbing Fixtures
- ◆ 3 Bedrooms and 2 Baths
- ◆ 1,538 Sq Ft
- ◆ Lot 12A: .14 Acre
- ◆ 2 Car Garage
- ◆ Our Exclusive Double-Layer Wall System
- ◆ Double Hung Alliance Windows (Limited Lifetime Warranty)
- ◆ 1 Year Builder, 10 Year Structural, & 30 Year Dry Basement Warranties



All Loos Homes are Focus on Energy Tested & Certified and exceed the Wisconsin Green-Built™ Standards!



Call/Text/Email Listing Agent:

DEANNE WELPER



(262) 352-1654 or Deanne@looshomes.com

Home rendering shown above may not reflect the actual home built and shows some optional features.